

Window Opening Control Device Installation Instructions

for Double-Hung Windows

For questions call 1-844-332-8288 Monday - Friday, 8 a.m. to 5 p.m. Eastern Standard Time (EST). **Please leave this guide with building owner.**

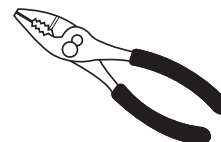
- Consult building and fire codes for your jurisdiction before installing Window Opening Control Device
- Read guide from beginning to end before starting installation. Read all warnings and cautions during unit installation. Failure to follow these instructions may result in the Window Opening Control Device being ineffective in preventing falls through an open window.

Tools & Materials Required



Safety Glasses

Chisel



Pliers

⚠ WARNING

This window opening control device is not a security device that provides intrusion protection.

⚠ WARNING

Use caution when working at elevated heights and around unit openings. Follow manufacturers' instructions for ladders and/or scaffolding. Failure to do so may result in injury or death.

⚠ WARNING

Follow manufacturers' instructions for hand or power tools. Always wear safety glasses. Failure to do so may result in injury and/or product damage.

NOTICE

Important safety information. Leave this information for the building occupant.

Remove Current Vent Latch

1

Chisel

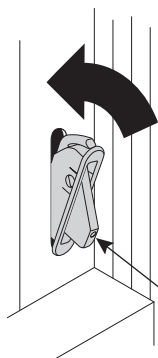
Insert chisel flat side facing out underneath top edge of vent latch and pry out. Tapping top of chisel with the palm of hand may disengage vent latch more easily. Use caution with chisel so sharp edges do not damage vinyl.

Vent Latch

2

Once vent latch is partially removed from opening, use pliers to remove vent latch. Repeat for second vent latch and discard.

Insert Window Opening Control Device

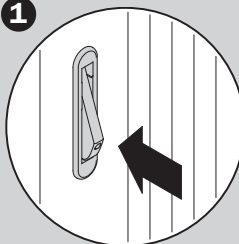


Hold with orange dot on bottom facing outward. Tilt bottom inward and push into hole. Window Opening Control Device will snap into hole. Repeat for second device.

Orange Dot

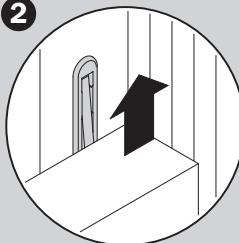
To Fully Open Window

1



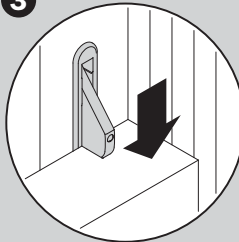
Push bottom of both Window Opening Control Devices near orange dot.

2



Raise bottom sash past devices.

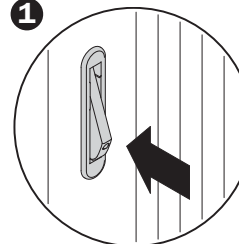
3



Window Opening Control Devices automatically reset when bottom sash is lowered.

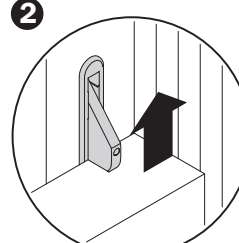
To Engage Window Opening Control Device

1



Push orange dot to re-engage Window Opening Control Devices.

2



Raise bottom sash to make sure devices work properly. Window should not open more than 4 inches.

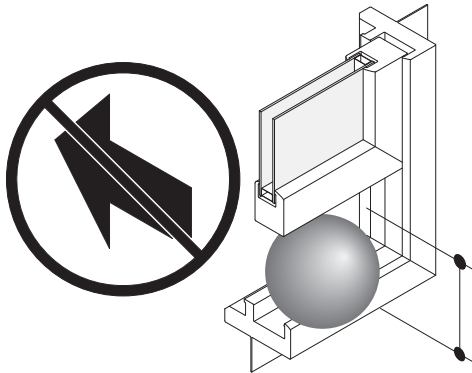
- Properly maintain window opening control devices and verify correct window opening control device operation on a monthly basis. Window opening control device should automatically re-engage when closing bottom sash. After activation of the window opening control device check for openability. Clear opening must be less than 4 inches.
- Teach household members six years old and older how to operate the release mechanism in case of an emergency.

IMPORTANT SAFETY INFORMATION

Please leave this safety information with building occupant.

Designed, manufactured and tested to the requirements of ASTM F 2090-08 and F 2090-10.

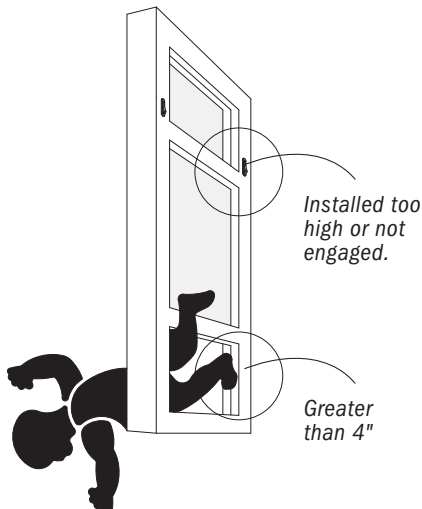
! WARNING



*Less than 4"
so that a rigid
sphere can not
pass through*

Possible Fall Hazard

- Young children may fall out of the window if the opening control device is not installed correctly. Install the Window Opening Control Device so that a rigid 4.0 inch diameter sphere does not pass through any space in the window opening after the Window Opening Control Device is in place.
- Follow manufacturer's assembly and installation instructions carefully. Failure to do so may result in accidental window falls.
- Window Opening Control Device is designed to protect against accidental window falls by children five years and younger.
- Window Opening Control Device is not a substitute for careful supervision of all young children.
- Keep Window Opening Control Device engaged unless needed for use in an emergency.



*Installed too
high or not
engaged.*

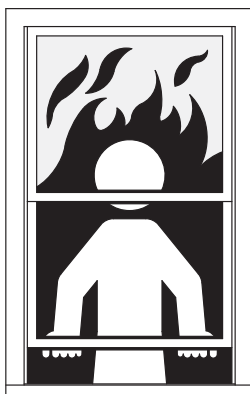
*Greater
than 4"*

Young children may fall out of the window if all instructions are not followed:

- Use recommended materials and techniques.
- Make sure the Window Opening Control Device is securely attached to the window sash as directed.
- Make sure that the window frame is in good condition.

No Window Rescue Above 75 Feet (6th Floor)

- Fire rescue ladder may not reach beyond 75 feet (6th floor).
- Do not rely on being rescued from windows above 75 feet (6th floor). Follow building escape plan.



Blocks Escape in Fire and Emergency Unless Released

- Follow instructions on reverse side to properly operate the Window Opening Control Device to open window.
- Never apply padlocks or devices that require a key or tool to unlock them to the Window Opening Control Device.